

Teclumos Screwed Sight Glass Fitting SD

• Application:

Teclumos Screwed Sight Glass Fitting SD is used for the visual control of processes inside pipelines, vessels, storage tanks, mixers, reactors, etc.

They are particularly suitable for pharmaceutical, cosmetics, and food processing industries (pharmaceutical plants, milk industry, etc.).

• Features and Options:

- Similar to DIN 11851
- It can be combined with Teclumos SKD light glasses.
- Pressure: Max. 6 bar
- Vacuum
- Temperature: Depending on the gasket

• Materials of components (shown in adjoining figure):

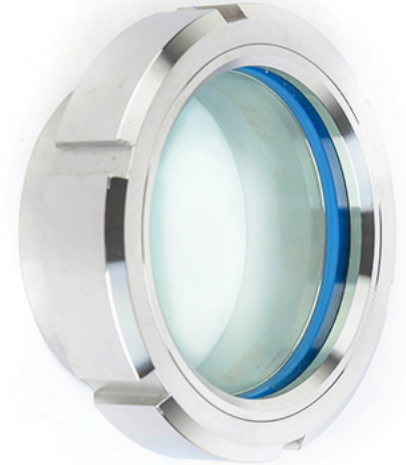
Items	Parts	Material options
1	Grooved collar nut	AISI 304 L stainless steel or alternative
2	Gasket	AISI 304 L stainless steel or other
3	Glass disc	- Soda lime glass: toughened, material acc. to DIN 8902, for max. temp. 150°C - Borosilicate glass: toughened, material acc. to DIN 7080, for max. temp. 280°C
4	Gasket	EPDM, Viton, Perbunan (NBR), Silicone or other
5	neck nozzle	AISI 316 L stainless steel or other

• Installation:

After welding nozzle(5) into the vessel wall, gasket(4), glass disc (3), and gasket(2) are assembled in the sequence and tightened down by the grooved collar nut(1) against the neck nozzle.

• Dimensions:

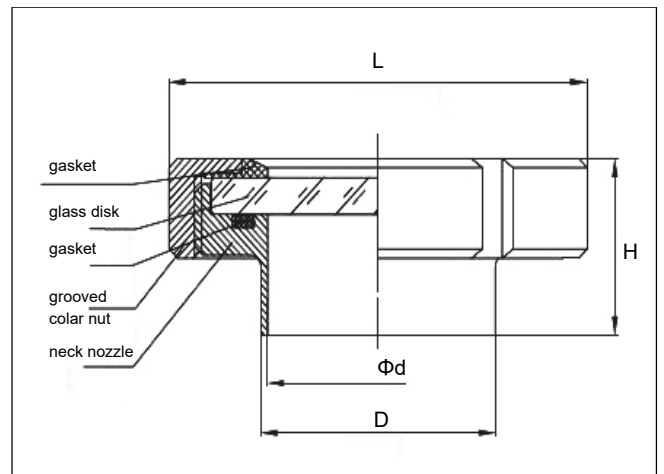
DN	L	D	d	H
25	64	29	25	27
32	71	34	31	29
40	80	41	37	30
50	93	53	49	31
65	108	71	66	32
80	127	86	81	34
100	148	105	100	36
125	178	130	125	39
150	213	155	150	44



Design of Teclumos screwed sight glass fitting SD



Components of Teclumos screwed sight glass fitting SD



All dimensions in mm.

Teclumos Co.

Saray Mah. Dr. Adnan Büyükdeniz
Cad. Ümraniye, İstanbul, Turkey
E-Mail: info@teclumos.com
Web: www.teclumos.com