

## Teclumos Rectangular Sight Glass Fitting

### Application:

Teclumos rectangular sight glass fittings may be used to observe the interior of reactors, columns, silos, vessels, storage tanks, and pipelines. They serve mainly as liquid level gauges. They are delivered ready to be welded onto a vessel wall, complete with the appropriate seals, glass plates, and cover fastenings.

### Operating conditions:

Nominal pressure: 16 bar

Vacuum

Note: The nominal pressure indicated refers to the design base of the sight glass. When welded into the vessel concerned, the base frame becomes part of the vessel wall. It is necessary; therefore, those appropriate strength calculations are made on all vessels involved concerning the design pressure and size of the vessel and in accordance with the relevant design code. If found to be necessary, reinforcement of the vessel wall has to be carried out.

Operating temperatures:

100 °C max. with sodium silicate glass to DIN 8903

243 °C max. with borosilicate glass to DIN 7081

Note: The above-indicated temperatures refer to the use of unprotected glass plates.

### Materials:

#### Parts:

	material options
base frame	AISI 316 stainless steel or alternative
seal	KLINGERSil C-4400; Neoprene; PTFE or alternative
sight glass plate	-Soda lime glass: thermally prestressed, DIN 8903, max 100°C -Borosilicate glass: thermally prestressed, DIN 7081, max 243°C
cover frame	AISI 316 stainless steel or other
cover fastenings	AISI 316 stainless steel or other

### Installation:

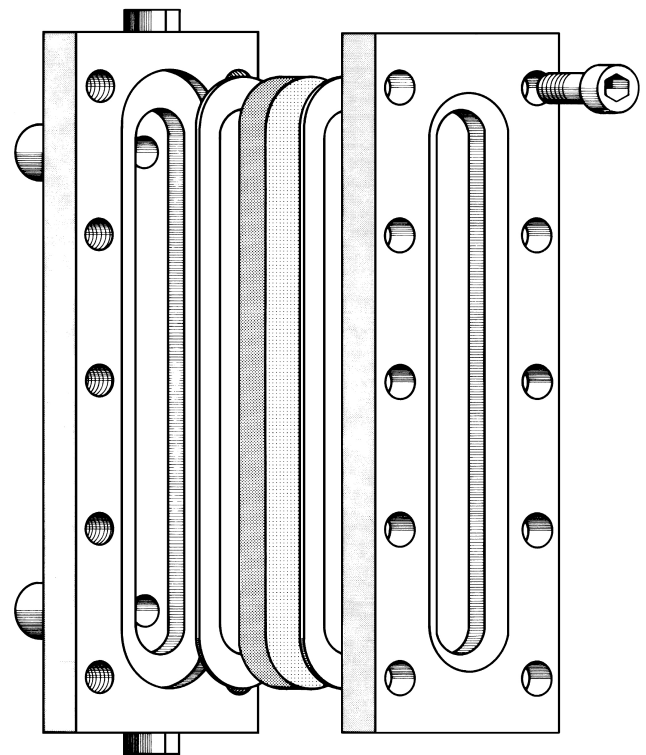
Before assembling check the base flange to make sure that the seating for the glass is flat and free from any distortion resulting from welding into/onto the vessel wall. Any distortion or uneven spots can lead to leakage or even breakage of the glass when the cover flange is tightened down.

After the base flanges welded correctly, place glass gaskets and cover frame in the order shown in adjoining illustration into the recess of the base flange and locate with bolts ensuring all is appropriately seated when bolts are hand tight.

Progressively and carefully tighten down cover flange commencing with bolts in the middle of the flange and working outwards in a crosswise alternating sequence.

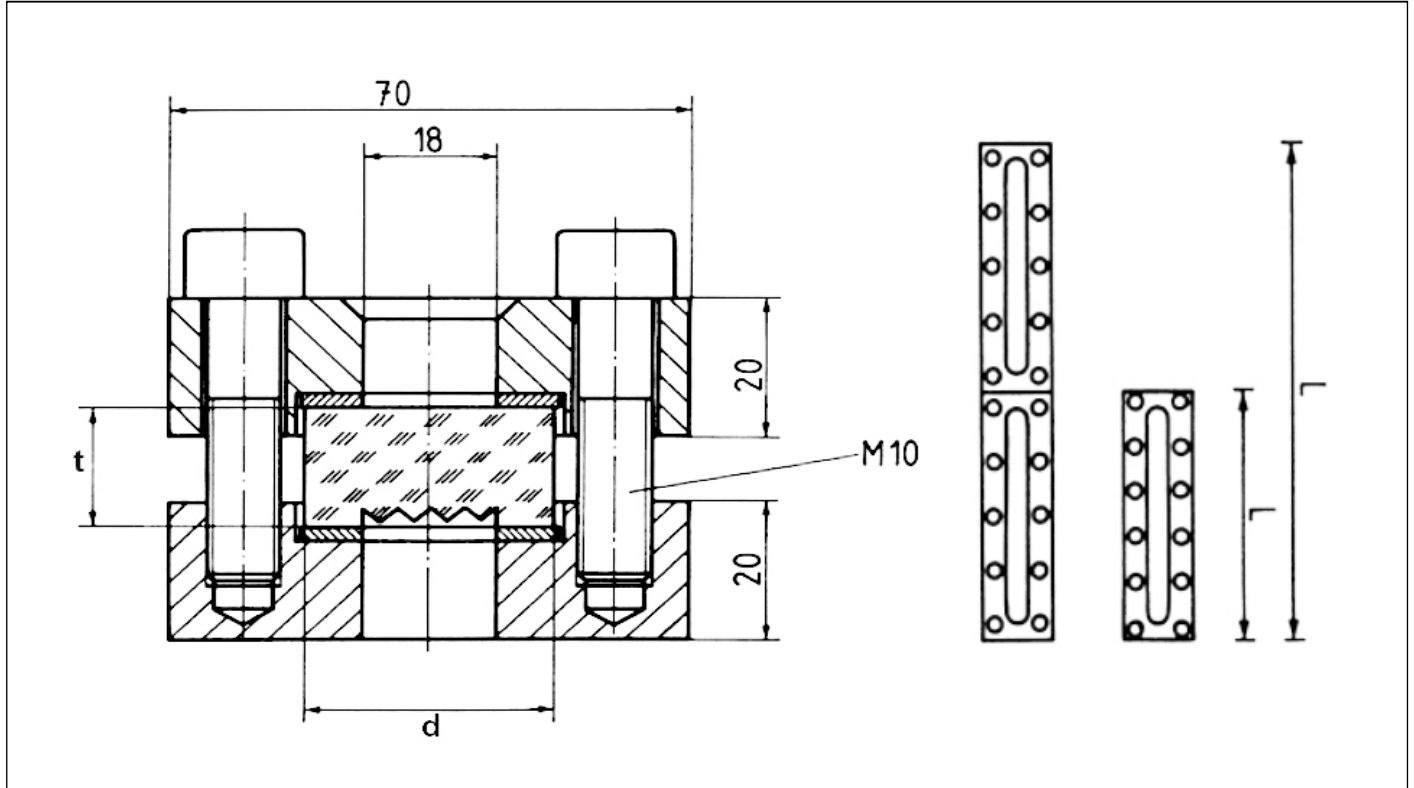


Design of Teclumos rectangular sight glass fitting



### Teclumos Co.

**Dimensions:**



Size		A	B	C	D	E	F	G	H
Fitting	L	250	300	350	400	500	600	700	800
Sight glass plate	quantity	1	1	1	1	2	2	2	2
	length	220	280	320	370	220	280	320	370
	d	34	34	34	34	34	34	34	34
	t	17	17	17	17	17	17	17	17

**Options:**

- Version with closed base frame to be used as an external liquid level gauge with top and bottom pipe connections. For this application, the base frame will be supplied appropriately drilled and tapped.
- Radiused base frame to suit vessel wall
- Clear glass plate
- Alternative versions in shape and size
- Optional extras possible, e. g. coating!

All dimensions in mm.

**Teclumos Co.**

Saray Mah. Dr. Adnan Büyükdeniz  
Cad. Ümraniye, İstanbul, Turkey  
E-Mail: [info@teclumos.com](mailto:info@teclumos.com)  
Web: [www.teclumos.com](http://www.teclumos.com)